
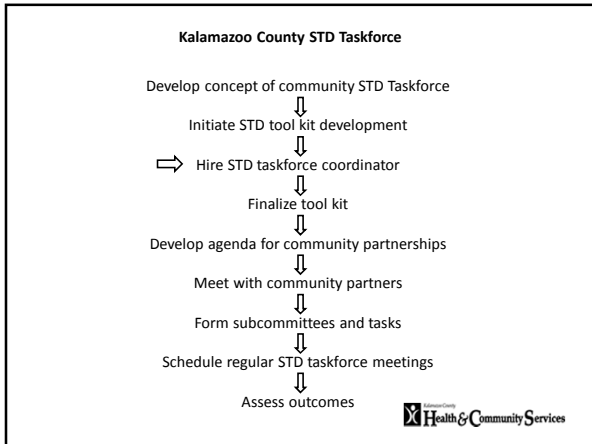
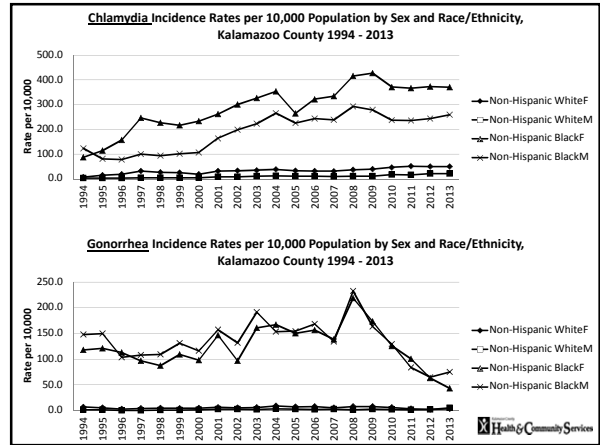
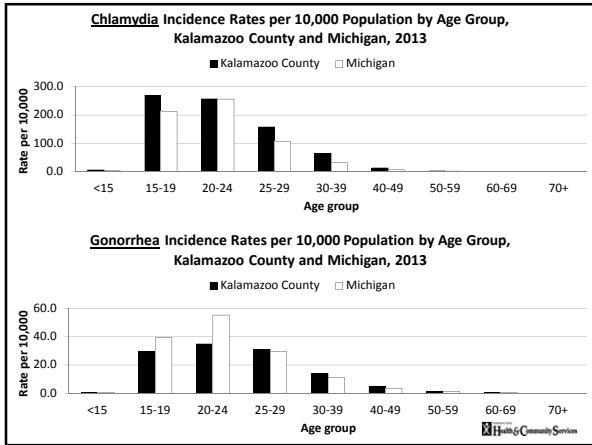
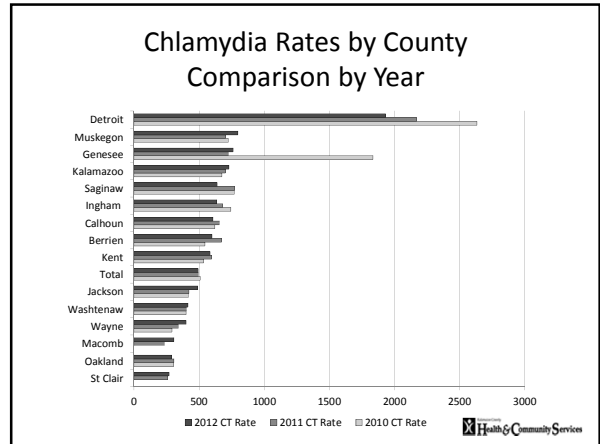


Kalamazoo County STD Statistics (DH)

Current Development of Kalamazoo County STD Taskforce (DH)

Results of expansion of DIS program and FDT for STDs (LN)

Current development of outreach clinics for STDs (LN)

STD Toolkit

Chlamydia

Chlamydia is a common bacterial infection that can cause serious complications if left untreated. It is often asymptomatic, but can lead to long-term health problems, including infertility and chronic pain.

Prevention:


- Use condoms consistently and correctly.
- Get regular STI screenings.
- Limit the number of sexual partners.

Treatment:

- Chlamydia is treated with antibiotics.
- Complete the full course of medication.
- Avoid sex until the infection is completely cured.

Partner Notification:

- Identify and notify recent sexual partners.
- Encourage them to get tested and treated.

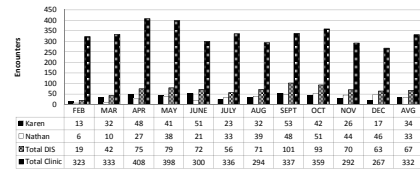


Expanded DIS Program

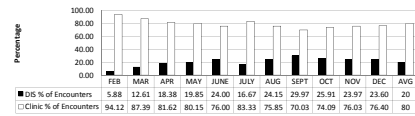
- December 2012 increased from 1.5 FTE to 2.5 FTE
 - Added 1.0 FTE DIS Specialist
 - DIS staff consists of 2 FTE DIS Specialists and 0.5 FTE Staff Assistant
 - Additional staff reduced time of partner services from 2-3 months down to 2-4 weeks
 - The number of clients referred to the STD clinic increased
 - Total number of clients tested and treated in the STD clinic increased



STD Encounters Referred by DIS by Month - 2013



Percentage of Clinic Encounters from DIS Referral - 2013



Community Outreach Clinics

- Using GIS maps data pinpointed highest incidence areas of Kalamazoo County
 - Began STD out-clinic in high incidence housing complex
 - 2 DIS Specialists walked through complex during clinic notifying residents of the clinic
 - 2 nurses tested clients for gonorrhea and Chlamydia
 - 1 front desk member handled paperwork
 - Clinic was once per month from 1-3 PM
 - 12-17 clients per clinic
 - 25% of the tests came back positive
- Out clinic has been moved to community center with signed rental agreement for monthly clinic



Kalamazoo County

